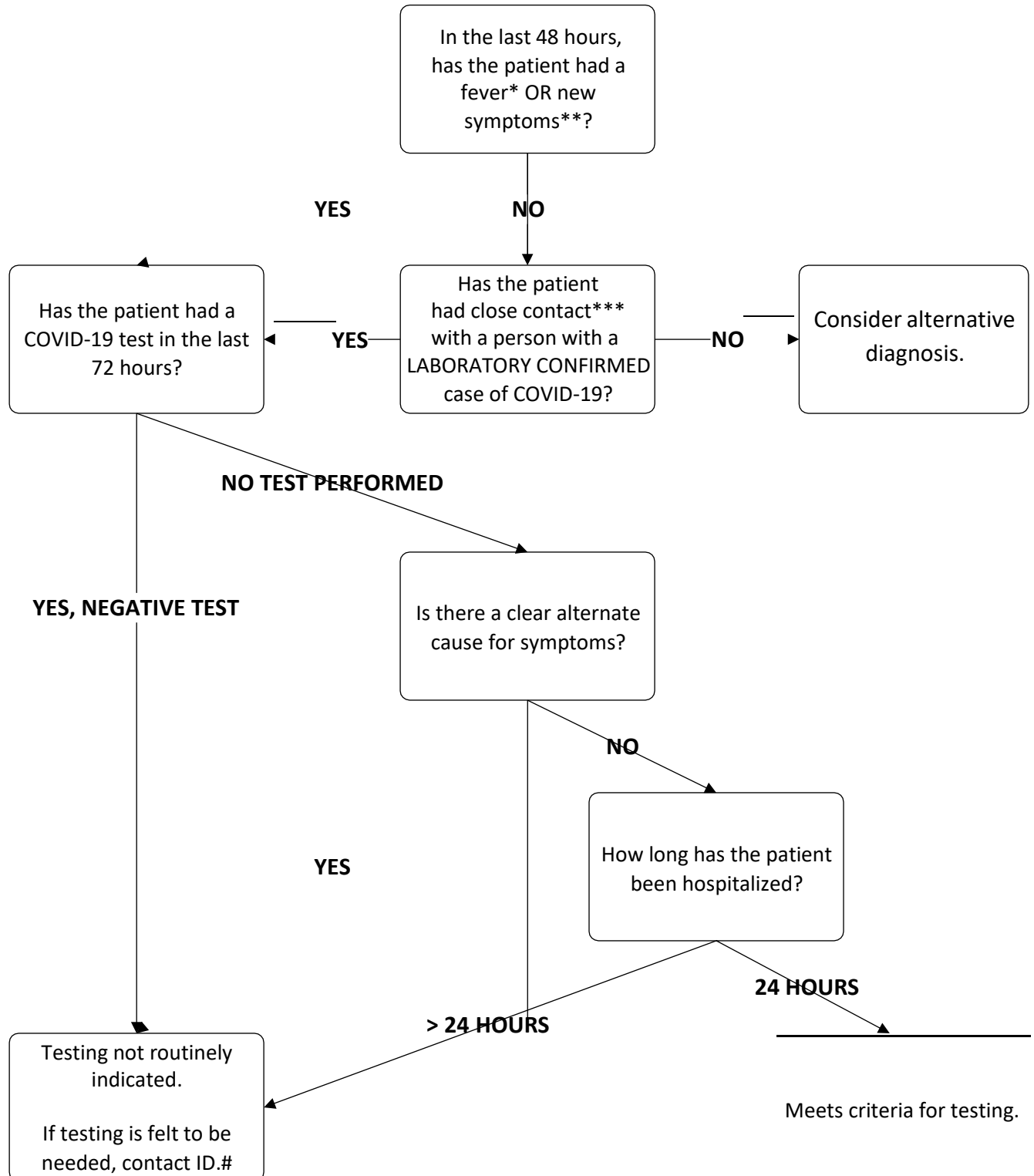




Inpatient COVID-19 Testing Algorithm

Does my patient need testing for COVID-19?

RST/MCHS Inpatient COVID-19 Testing Algorithm



*Fever present at any point in the last 48 hours: can be objective (100.5 F) or subjective

**Symptoms include new: cough or shortness of breath, sore throat, diarrhea, respiratory distress, chills, myalgias, loss of smell, or change or loss of taste sensation

***Close contact is defined by CDC as household contact or:

1. Being within approximately 6 feet of a COVID-19 patient for a prolonged period of time (more than 5 minutes).
2. Having direct contact with infectious secretions of a COVID-19 case (e.g. being coughed on)

Order Infectious Disease COVID-19 consult